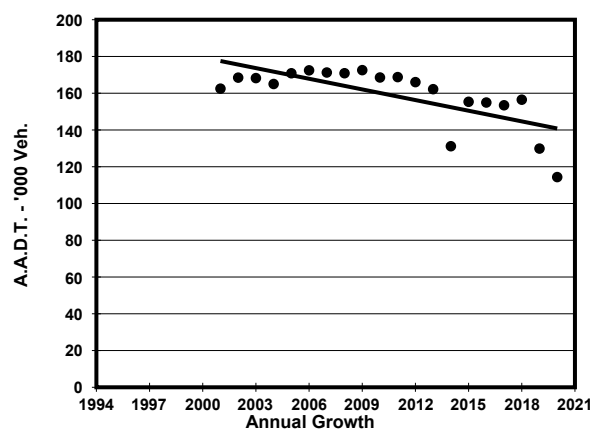
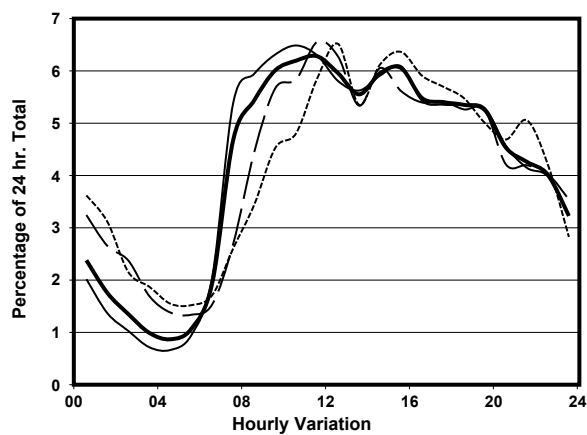
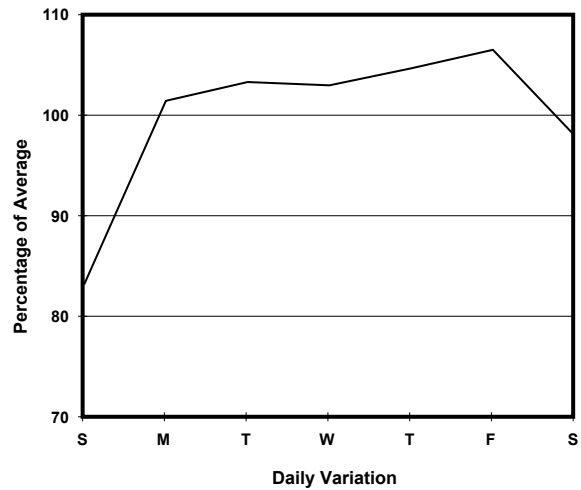
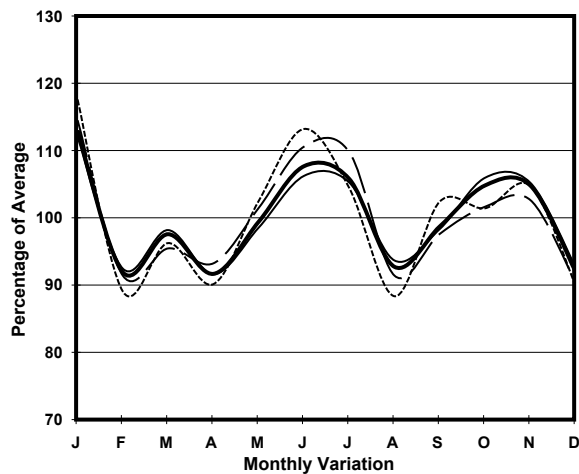


YEAR 2020
CORE STATION 1028
ROAD NETWORK MAJOR
ROAD TYPE URBAN TRUNK ROAD

LINK GLOUCESTER RD (from ARSENAL ST to CROSS HARBOUR TUNNEL S. INT)

6.5m 15.8m 2.8m 19m 5.3m
E bound 5 lanes W bound 5 lanes

1. TRAFFIC FLOW VARIATION AND GROWTH



— All day - - - - - Mon.- Fri. Sat. - . - . - Sun.

2. TRAFFIC CHARACTERISTICS (BY DIRECTION)

Parameter	All - Day	Mon. - Fri.	Sat.	Sun.
EAST BOUND				
A.A.D.T.	52140	55750	49590	39850
R 12 / 24 - %	70.1	71.7	66.1	64.1
R 16 / 24 - %	87.9	89.7	82.8	82.2
AM Peak Hour	0900-1000	0900-1000	0900-1000	0900-1000
One-way flow at AM peak hour	3290	3830	2520	1540
T - % (AM)	-	-	-	-
PM Peak Hour	1600-1700	1600-1700	1600-1700	1600-1700
One-way flow at PM peak hour	3050	3220	2950	2520
T - % (PM)	-	-	-	-
Prop.of commercial vehicles - 16 hr.	-	-	-	-
WEST BOUND				
A.A.D.T.	62230	63950	63310	56320
R 12 / 24 - %	66.9	68.5	63.3	61.7
R 16 / 24 - %	85.1	86.5	81.8	81.3
AM Peak Hour	0900-1000	0700-0800	0900-1000	0900-1000
One-way flow at AM peak hour	3590	4260	3880	2820
T - % (AM)	-	-	-	-
PM Peak Hour	1700-1800	1700-1800	1700-1800	1600-1700
One-way flow at PM peak hour	3300	3370	3360	3160
T - % (PM)	-	-	-	-
Prop.of commercial vehicles - 16 hr.	-	-	-	-

3. OTHER INFORMATION AND COMMENT